



Welcome to **Minamiaizu Town**



Minamiaizu Town is truly a beautiful place in which to experience Japan. Please enjoy the Minamiaizu Town Promotional Video by scanning the following QR code with your smartphone.





Aizu Tajima Gion Festival

Place Aizu Tajima **Dates** July 22-24

For more information, please visit the following websites.



Town Hall website



Tourism Association website

An 800 years long tradition, the Nanahokai (Seven Sacred Vessels) procession is held in the early morning of 23rd July, and is the highlight of the festival. Nanahokai is also known as the "Bridal procession".

Date of Nanahokai: July 23, 7:50 ~



Otoyua Osendo

Dates January 15



Mikoshi (portable shirine) procession

Dates July 23 10:30 ~ ,13:15 ~



Yatai (festival floats) procession & Children's Kabuki performance

Dates July 22,23 16:00 ~



Furumachi Festival

Place Furumachi , Ina

Dates 2nd Saturday & Sunday of September

People dress in Kamishimo (Samurai Ceremonial wear) and conduct a procession through the golden rice fields in the early morning. This procession is highlight of festival.

Date of procession: 2nd Saturday of September 7:00 ~ ,11:30 ~ ,17:00 ~

Maezawa Magariya Village has been designated as an “Important Preservation District for Groups of Traditional Buildings” by the national government.



Maezawa Magariya Village (Mountain village)

Museum open 8:30-16:30 **Closed** Winter season (mid-Nov. to mid-Apr.)

Fee Adult 300 yen Children 150 yen **Place** Maezawa, Tateiwa



Maezawa website

The L-shaped houses with thatched roofs allowed farmers to protect their horses during the heavy snowfalls of winter. Internal stables and toilets were unusual at that time. Between the years of 1592-1595, a Samurai called Kokatsu Nyudo settled down in Maezawa Magariya village.



Kuryuzawa Mitsushishi

The Oyama shrine festival has been inherited from the village's rich ancestry and is a perfect example of traditional Japanese culture.



Kouya Sanbikishishi

The Inari shrine festival is held at night to ward off bad spirits and to pray to the gods for good health.



Nango Saotome Dance

The Nango Saotome dance is a traditional dance based around the planting of rice. It is performed in the winter to wish for a good harvest.

Enquiries : TEL 0241-73-2029 Hanaizumi Sake Brewery



Sainokami Bonfire

The Sainokami bonfire is set alight to wish for a good harvest of the 5 grains: wheat, rice, beans, foxtail millet and proso millet.



Hime Sayuri Blossoms

Place Takashimizu Nature Park, Nango

Open 8:00-16:00

Fee 300yen

Peak season Mid-June to early July



More details on
Hime Sayuri Blossoms

The largest Hime Sayuri colony in Japan is located in Takashimizu Nature Park.

During the Hime Sayuri season, the pink ocean of Hime Sayuri expands across the park and is truly breathtaking.

Mt.Tashiro in Oze National Park

Place Yunohana, Takatsue

Peak season Early June to mid-October



More details on Mt.Tashiro
in Oze National Park

This large marsh is on the summit of Mt. Tashiro. Mt.Tashiro is one of the top 100 flowering mountains in Japan. Oze National Park attracts masses of tourists every year due to its outstanding natural beauty.



Enjoy “Japow” at Minamiaizu’s Wonderful Ski Resorts.

Season Mid-December to late March

There is a fantastic selection of resorts for skiers and snowboarders:

Fine and dry powder at Takatsue Ski Resort,
A great variety of courses at Daikura Ski Resort,
Skiers only at Takahata Ski Resort,
Enjoy park riding at Nango Ski Resort.

More information at Minamiaizu ski resorts' websites



Takatsue



Daikura



Takahata



Nango





Komado Marshland

Place Haryu, Aizu Tajima

Peak season May to October



MAP

There are many alpine plants such as fluffy white cottongrass and white skunk cabbage. The Komado Marshland is designated as a national monument. It is a five minute walk from the nearest parking lot.



The Furumachi Great Ginkgo Tree

Place Furumachi, Ina

Peak season Late October to early November



MAP

Over 800 years old, standing at 35 meters tall and spanning 16 meters wide, the Great Ginkgo Tree hits its peak in early November. The golden bloom of the ginkgo tree is overwhelmingly beautiful.



Byoubu Iwa (Sheer cliffs)

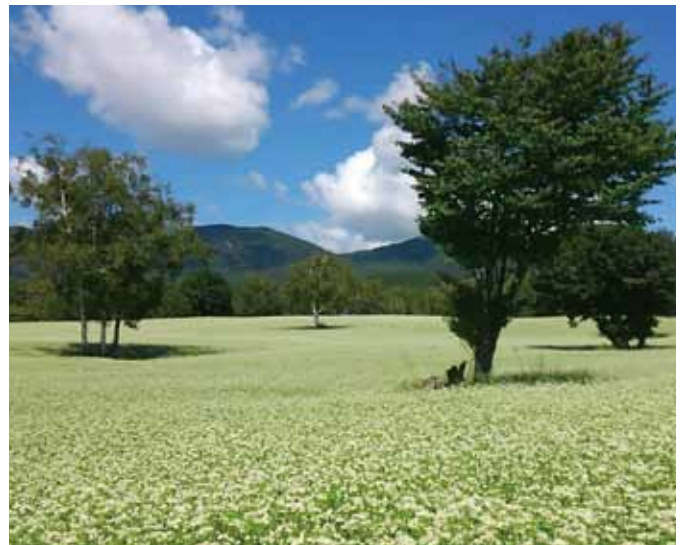
Place Oomomo, Ina

Peak season May to November



MAP

Over the years, the rapids of the Ina River have eroded the cliffs and have left a sheer cliff face. During the autumn, the trees among the cliff are a vibrant spectrum of colours.



Soba Field in Takatsue

Place Takatsuehara, Takatsue

Peak season Mid-August to early September



MAP

At 1,000 meters above sea level, you can see the Soba Field lit up from late August until early September.



Nango Tomato

Harvest season Late July to early October

Nango tomatoes have a well-balanced acidity and sweetness and a firm texture. The unique climate of Minamiaizu, the high altitude, and the temperature differences between night and day creates the great taste of the Nango Tomato.

Asparagus of Aizu Tajima

Harvest season Late March to early October

Asparagus harvested in Minamiaizu, where the temperature difference between night and day is severe, is characterized by its fresh and sweet texture.



Soba (Buckwheat)

Harvest season From late October

High quality soba grows in Minamiaizu where there is a great difference in temperature between night and day. Minamiaizu's Soba noodles go down very smoothly and are incredibly flavorful.

Japanese Sake

Minamiaizu's award winning sakes are renowned across Japan and use locally sourced water and rice to make their sake. The breweries use traditional methods that have been mastered over generations to produce their delicious sake.

Please take a look at Minamiaizu sake breweries' websites.



AIZU



OTOKOYAMA



KOKKEN



HANAIZUMI





Tokusa Onsen

Open Iwaburo 24 hours
Hirosenoyu 15:00-19:00
(opening times may vary)

Fee Iwaburo 200 yen
Hirosenoyu 300 yen

Iwaburo Onsen is a unisex onsen. Women can rent towels to take into the baths for modesty purposes. The Hirosenoyu Onsen has separated baths for men and women.



Furumachi Onsen Akaiwa-so

Open 9:30-20:00

Closed Every Wednesday

Fee Adult 600 yen
Children 100 yen



Akaiwa-so
website

It is said that bathing in this onsen can heal minor flesh wounds and is good for those with skin conditions due to its rich concentration of minerals from the mountain springs.



Yamaguchi Onsen Kirara289

Open 10:00-20:00

Closed Every Tuesday

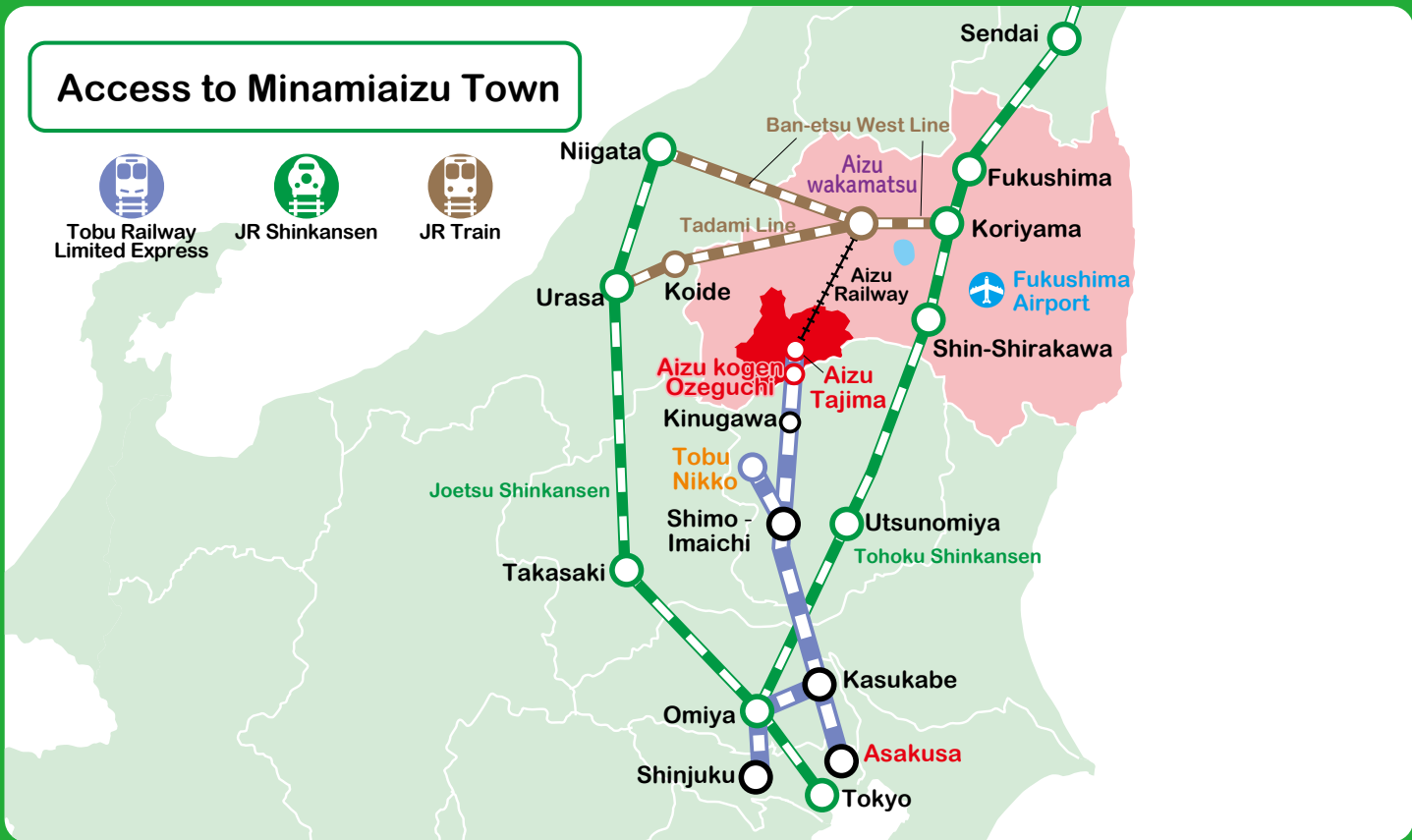
Fee Adult 700 yen
Children 300 yen



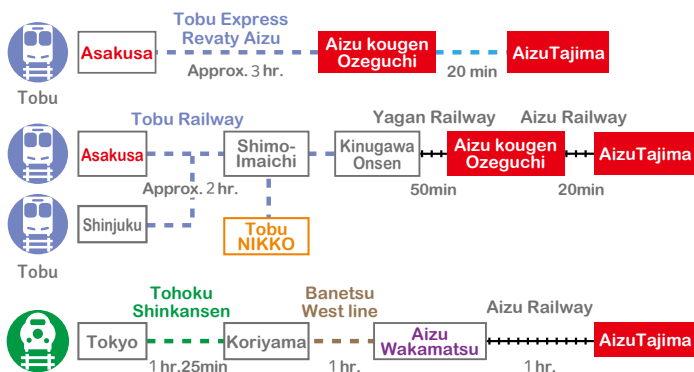
Kirara 289
website

Yamaguchi onsen's efficacy is good for treating nerve pain,relieving muscle pain, and stiff joints. Kirara 289 also has a fantastic restaurant offering local specialities such as Tomato Ramen; made from Nango's award winning tomatoes.

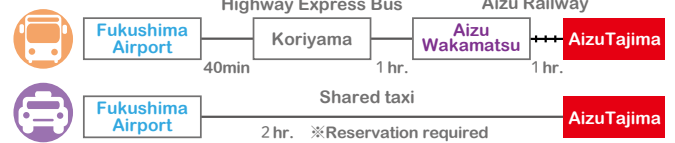
Access to Minamiaizu Town



From Tokyo



From Fukushima Airport



Bicycle Rental (Late April to November)

- Aizu Tajima Station (Open:9:00-17:00)
TEL 0241-62-2250 (Minamiaizu Kanko Inc.)
- Shimogo Station (Open:9:00-16:30)
TEL 0241-67-2320 (Station Café Shimogo)

Car Rental

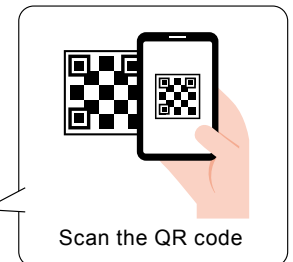
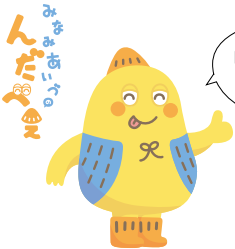
Only a 3 minute walk from Aizu Tajima Station, Aizu Rent A Car offers a wide variety of vehicles for you to use to explore Minamiaizu Town. (International Driver's Permit required)

- Aizu Rent A Car (Open:8:00-18:00) ★Reservation required
TEL 0241-64-5330



Aizu Rent A Car booking website

WELCOME MINAMIAIZU



We post the charm of Minamiaizu Town daily.

Minamiaizu Town Hall Commerce & Tourism Division

3531 Ushiroharakou, Tajima Minamiaizu Town, Minamiaizu Gun,
Fukushima 967-0004 JAPAN
TEL 0241-62-6200 FAX 0241-62-1288
<http://www.minamiaizu.org>



Minamiaizu Town Tourism & Local Products Association

2 Biwanokage, Nagata, Minamiaizu Town, Minamiaizu Gun,
Fukushima 967-0006 JAPAN
TEL 0241-62-3000 FAX 0241-62-2910
<http://www.kanko-aizu.com/>

